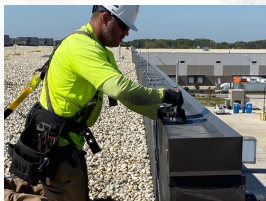


# The Power of Lightning.

There can be over 100 lightning strikes per second - reaching temperatures hotter than the surface of the sun. One lightning strike can stop it all - emails, production lines, business transactions or first responders' ability to respond.



## BE PREPARED.

### Assess your risk.

The risk of lightning to a building includes more than the location. What's happening on the "inside" of that building? Who is inside? What services or valuable operations are being performed.

## BE PROTECTED.

### Lightning Protection Systems

are scientifically proven to mitigate risks. Utilize certified lightning contractors who are experienced in the specific design protocols and national standards.

# RESOURCES.

For more details on lightning protection systems, personal safety, and resources visit: [www.lightning.org](http://www.lightning.org).



Locate LPI Certified Contractors to start your project.

Download Specifications

Find Articles and Research

Purchase Standards

Education and Technical Resources



Register for Installer Certification

Become a Member

## Start a Conversation with us!



800.488.6864

[lpil@lightning.org](mailto:lpil@lightning.org)

333 Peterson Rd., Suite F  
Libertyville, IL 60048

[www.lightning.org](http://www.lightning.org)



LIGHTNING PROTECTION  
INSTITUTE

Lightning ranks second to floods when it comes to damage.

Insurance Information Institute

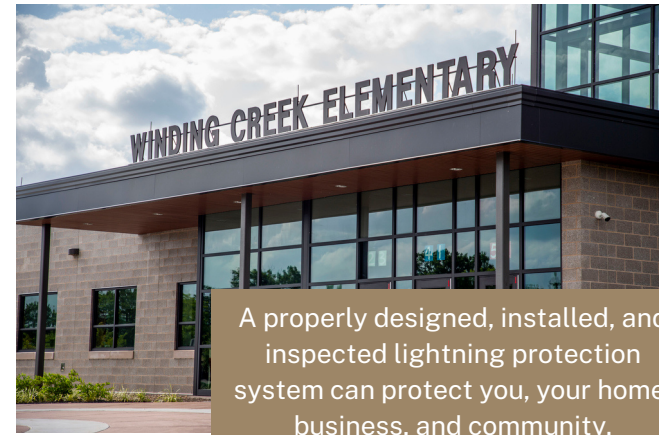


BE PREPARED.  
BE PROTECTED.

Lightning Protection Systems

# IT'S A SYSTEM.

Lightning protection requires more than a rod and a cable. A lightning protection system consists of **6 key components** that follow national standards and are installed by LPI Certified Contractors.



A properly designed, installed, and inspected lightning protection system can protect you, your home, business, and community.



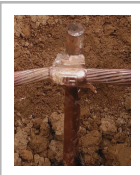
## Strike Terminations

Strike termination devices (Air terminals / Lightning Rods) are the conductive component capable of receiving a lightning strike.



## Conductors

Cables connecting the terminals to grounding.



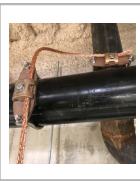
## Grounding

The ground electrode is the portion of the system that provides an electrical contact with the earth.



## Surge Protection

Installed at electrical panels and surge suppressors provided for building electronics.



## Potential Equalization

Bonding, the joining of metallic bodies and roofing components to ensure conductivity.



## Inspection/Certification

The Lightning Protection Institute - Inspection Program is the most comprehensive 3rd party & accredited inspection program. [www.lpi-ip.com](http://www.lpi-ip.com)

## How does the system work?

A lightning strike is intercepted by the strike termination device. The energy from the lightning strike is dispersed through the conductors and is directed to the grounding components to safeguard the structure and the electronic infrastructure.

### 1. Strike Termination Device

### 2. Conductors

### 3. Grounding

### 5. Surge Protection

### 4. Potential Equalization



### 6. Inspection/Certification by a 3rd party

